

Emotional Resonance: Expressions in Jewelry

Sylvie Tang Nga Man
(moisylviesylvie@gmail.com)

Introducing my jewelry collection, inspired by my own true story and the profound emotions evoked by life's journey. I aim to capture the complex interplay between emotions and perceptions through designs. Delving into the universal human experience, each piece reflects the challenge of maintaining individuality within societal norms. With themes of stress and release, this collection embodies the essence of resilience and hope during difficult times.

Collection Overview:

Part One: Endure and Transform - I express poignant emotions reflecting the initial hardships and the strength required to confront societal expectations.

Part Two: Persevere and Reclaim - This segment asserts strength amidst adversity, encouraging resilience as we face daily challenges.

Part Three: Thrive and Remember - Emphasizing maturity, this part encourages seeing beyond life's negatives, preserving positive memories, nurturing dreams, and clinging to hope, knowing growth often springs from pain.

Let's join me on a journey of self-discovery and authenticity, where every piece tells a story of perseverance and optimism.

PART ONE: ENDURE AND TRANSFORM



Toxic Growth I– Poisoned Blossom (Ring)
Toxic Growth II– Poisoned Blossom (Pendant)
Toxic Growth III – Virulent Vine (Brooch)
Thorny Liberation (Bracelet)
It's okay to cry (Rings & Bracelet.)
Heavy burden (Necklace)

PART TWO: PERSEVERE AND RECLAIM



Stay Hopeful I– Swings it up (Brooch)
Stay Hopeful II- Resilient Bloom (Ring)
Unstoppable Growth I (Brooch)
Unstoppable Growth II (Brooch)

PART THREE: THRIVE AND REMEMBER



Remember the Good I (Brooch)
Remember the Good II (Rings)
Remember the Good III (Bangle)
Keep dreaming (Brooch)

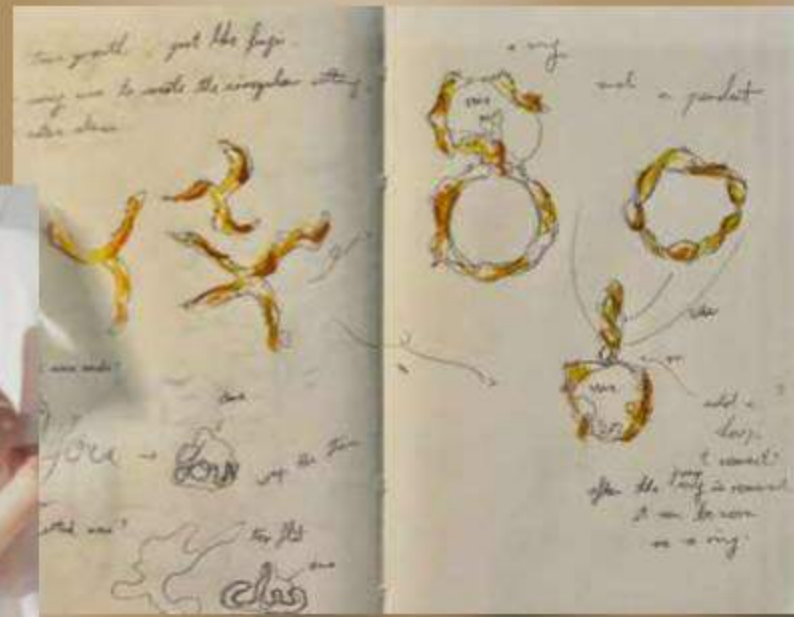
PART ONE: ENDURE AND TRANSFORM

Toxic Growth I- Poisoned Blossom (Ring)

Materials: Brass and Natural stones (Quartz)

Toxic Growth II- Poisoned Blossom (Pendant)

Materials: Brass and Natural stones (Quartz)



Growing up in a traditional environment, I drew inspiration from the organic growth patterns of fungi to symbolize the evolution of negative thoughts and emotions from childhood to adulthood.

The ring's shape represents the intricate structure of DNA, while the dots symbolize fungi spreading across our genetic code.

This visual metaphor reflects the persistent influence of traditional values and rigid beliefs instilled in us from childhood to adulthood, shaping our perceptions and behaviors.

Hiking, confirmed by doctors to offer mood enhancement and stress reduction, became my release source.

During my hikes, I collected unpolished natural stones as souvenirs, each representing a milestone in my growth journey.



PART ONE: ENDURE AND TRANSFORM



Toxic Growth III – Virulent Vine (Brooch)
Materials: Brass, Branch(Found in the village) and Stainless-Steel Pin



My design concept revolves around the theme of the invasion of toxic thoughts. I utilize a tree branch collected from the village as the foundational element, symbolizing life's natural and organic essence.

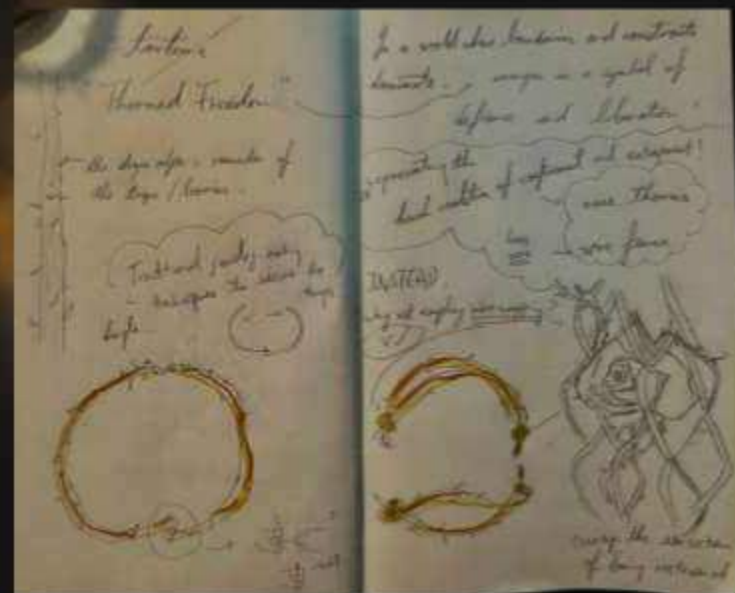
To represent the insidious nature of toxic thoughts, I craft intricate vines from copper, wrapping them around the tree branch. This imagery aims to evoke a sense of suffocation, mirroring the feeling of being tightly ensnared by the weight of negative thoughts. Through these intertwining copper vines, I capture the sensation of struggling to breathe, symbolizing the overwhelming presence of negative thoughts overshadowing the beauty of our minds.

Furthermore, I incorporate subtle details into the copper vines, such as small dots resembling fungal growth. These details serve as a visual metaphor for the spreading and multiplying nature of toxic thoughts, emphasizing their corrosive impact on our mental well-being.

PART ONE: ENDURE AND TRANSFORM



Thorny Liberation (Bracelet)
Materials: Brass, Chinese knotting cord



This piece embodies a powerful narrative at the crossroads of tradition and liberation, encapsulated in a bracelet design that exudes resilience and defiance.

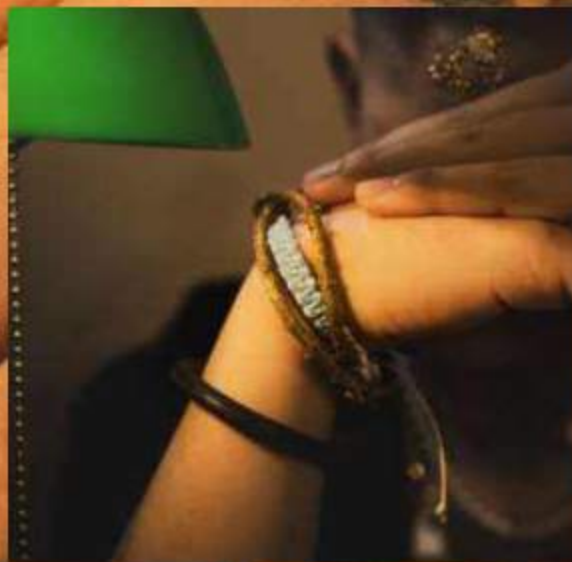
Drawing inspiration from the surrounding villages steeped in tradition, I reflected on the enduring spirit of persistence. While acknowledging the merits of traditional thinking, I embraced the theme of defiance, opting for wire wrapping to convey a sense of constraint, mirroring the bracelet's narrative.

The chosen materials - rose thorns, brass wire resembling a wire fence, and Chinese knotting cord - symbolize the fusion of ancient tradition with contemporary struggles.

The Chinese knotting cord weaves a cultural heritage narrative passed down through generations, intertwining with thorns and wire to bridge past and present, tradition and rebellion. Each thorn signifies the pain and adversity endured in pursuing freedom, while the wire fence represents societal barriers hindering self-expression.

This bracelet carries the weight of history and the promise of a brighter tomorrow.

Each knot tied serves as a poignant reminder of the resilience inherent within, a testament to the unyielding spirit of the human soul.





PART ONE: ENDURE AND TRANSFORM



It's okay to cry (Rings & Bracelet.)

Materials: Brass, Chinese knotting cord, Resin, Used Contact Lens

"It's Okay to Cry" underscores the importance of emotional release for everyone. I chose used contact lenses as a poignant symbol, reflecting my journey. Worn daily for extended periods, they serve as conduits for my perception, capturing every experience and etching it into the tapestry of my memories.

The structure of DNA inspires the five rings in this design, symbolizing the intricate patterns of our genetic code. Overlaying this motif is the imagery of toxic thoughts, depicted as fungi spreading across our essence.

By intertwining the five rings with Chinese knotting cords, I aim to evoke a bondage reminiscent of a stretched doll—accentuating feelings of constraint and suppression. This metaphorical imagery delves into the intricacies of being controlled by external forces, amplifying the sense of entrapment experienced in navigating societal expectations and conformity.

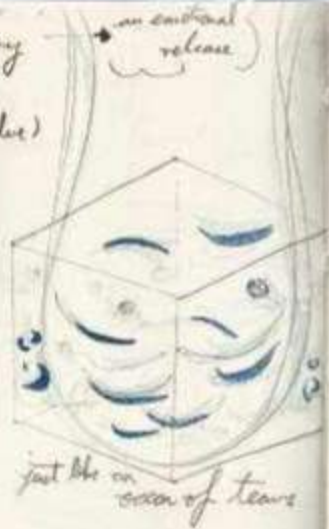
The multi-layered chain connecting the rings visually represents the numerous external pressures that weigh us down. It symbolizes the burden of societal norms and the relentless pursuit of conformity, which often dictate our actions and shape our identities.

In opting for a shiny texture, I add depth to the design, reflecting the delicate balance individuals maintain between their public persona and inner vulnerabilities. This choice underscores the inherent sensitivity surrounding reputation and the pressure to present only the most polished aspects of oneself to the world. However, this facade of perfection imposes additional strain, further complicating the struggle for authenticity and acceptance.

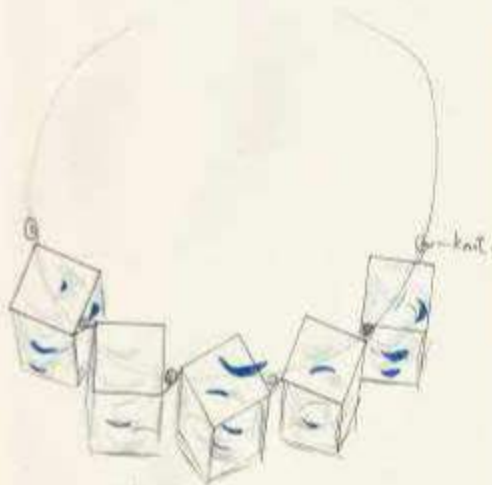
This piece serves as a vessel to preserve my tears and emotions, allowing for catharsis and healing. Through its design, I invite others to embrace their vulnerability and recognize that expressing their feelings is okay.

It's Okay To Cry

- neon
- contact lenses (light blue)
- buttons, and (small)
- or other (white)



a necklace



*using rope not shown

because I want to convey
a sense of bondage akin to
a stretched doll.

or five rings maybe!



Transforming it into five rings, as opposed to
crafting a necklace,
amplifies the sensation of being a stretched
doll; intensifying the feeling of being

CONTROLLED



PART ONE: ENDURE AND TRANSFORM



Heavy burden (Necklace)
Materials: Aluminum Chain, Brass, Cement, Quartz

The necklace's design concept encapsulates the theme of 'Heavy Burden,' symbolizing the weight of familial expectations, the challenges of traditionalism, the clash with conventional family norms, and enduring criticism from all sides.

Reflecting on my fifth year of diverging from my family's expectations, I've created five cement buckets adorned with patterns commonly seen in walled villages. Each bucket signifies a year of bearing this burden, serving as a tangible reminder of the weight I've carried.

In terms of shape, the irregular forms symbolize the varied burdens endured.

Adding a shiny chain underscores the significance of reputation in traditional Chinese culture, where individuals strive to present only their most favorable aspects to society.



PART TWO: PERSEVERE AND RECLAIM



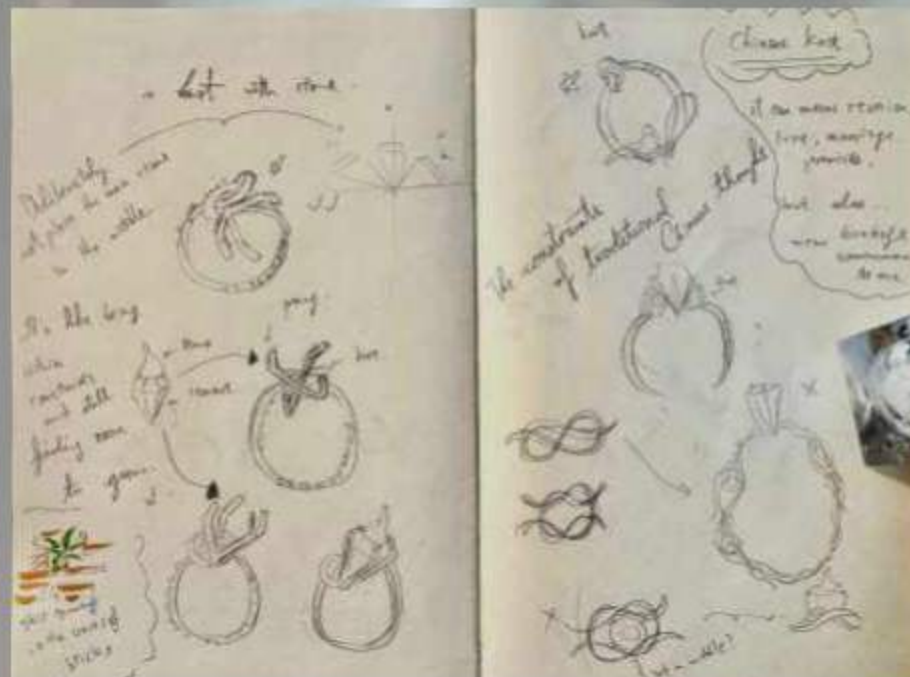
Stay Hopeful I– Swings it up (Brooch)
Materials: Brass, Cement, Quartz, Stainless Steel Pin

The core message of this design is resilience and the ability to remain hopeful even in constrained circumstances. It's akin to playing on a swing—no matter how restricted the environment may seem, we can still sway toward our dreams. As long as there are dreams, hope persists.



<https://youtu.be/9uS6mE2ryYM>

PART TWO: PERSEVERE AND RECLAIM



Stay Hopeful II- Resilient Bloom (Ring)

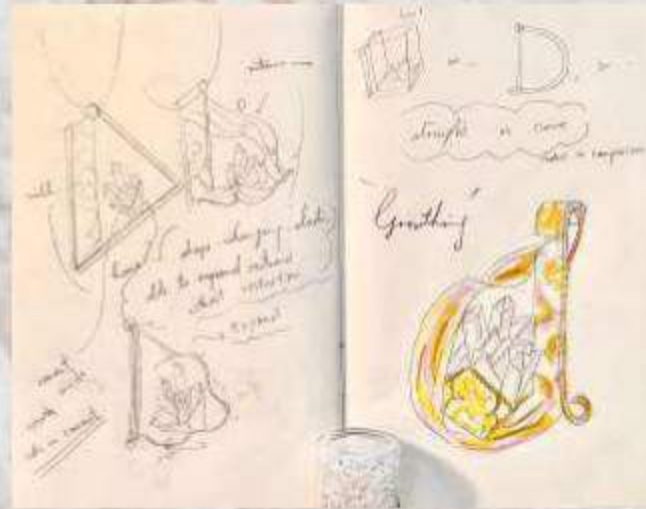
Materials: Brass, Cement, Quartz

This design draws inspiration from the resilience of wild grasses that thrive amidst urban landscapes. Despite the harshness of concrete surroundings, we often witness the tenacity of nature as small plants emerge from the tiniest crevices, symbolized by grasses sprouting through brick cracks.

The ring's centerpiece features a Chinese knot, symbolizing the constraints of traditional Chinese thought, which I perceive as a form of bondage. Deliberately placing the main stone beside the knot to evoke a sense of resilience: even within constraints, there's still space for growth.

This design serves as a testament to the strength required to endure adversity. It reminds us that despite challenging environments, we must persevere and thrive. For as long as we endure, hope remains alive.

PART TWO: PERSEVERE AND RECLAIM



Unstoppable Growth I (Brooch)
Materials: Brass, Quartz, Resin, Stainless Steel Pin

Unstoppable Growth II (Brooch)
Materials: Brass, Quartz, Stainless Steel Pin



This design embodies the sentiment, "YOU CAN'T STOP ME FROM GROWING!" It acknowledges the immediate obstacles to growth but emphasizes our resilience in finding ways to thrive, much like the survival of the fittest.

The incorporation of resin lends a sense of overflow, symbolizing our ability to surpass the boundaries imposed by our environment. As plants adapt and flourish despite challenges, we persist and overcome, pushing past limitations to achieve growth and fulfillment.



PART THREE: THRIVE AND REMEMBER



Remember the Good I (Brooch)
Materials: Brass, Stainless Steel Pin

The conceptual essence behind this brooch encapsulates the notion of 'Embrace maturity and foster positivity.' Within the confines of life's constraints lies a rich tapestry of cherished memories and invaluable treasures, interwoven amidst our growth journey.

Navigating through myriad challenges, we often encounter moments of constraint and limitation. Yet, through a shift in perspective, we unearth avenues of possibility and avenues for personal enhancement.

Much like the narrative depicted in the accompanying photograph, where one side features my hand juxtaposed with that of an older woman, the image imbues the story with depth and complexity. It signifies the convergence of two women, hailing from disparate eras and disparate experiences, yet united in confronting shared adversities and triumphs.

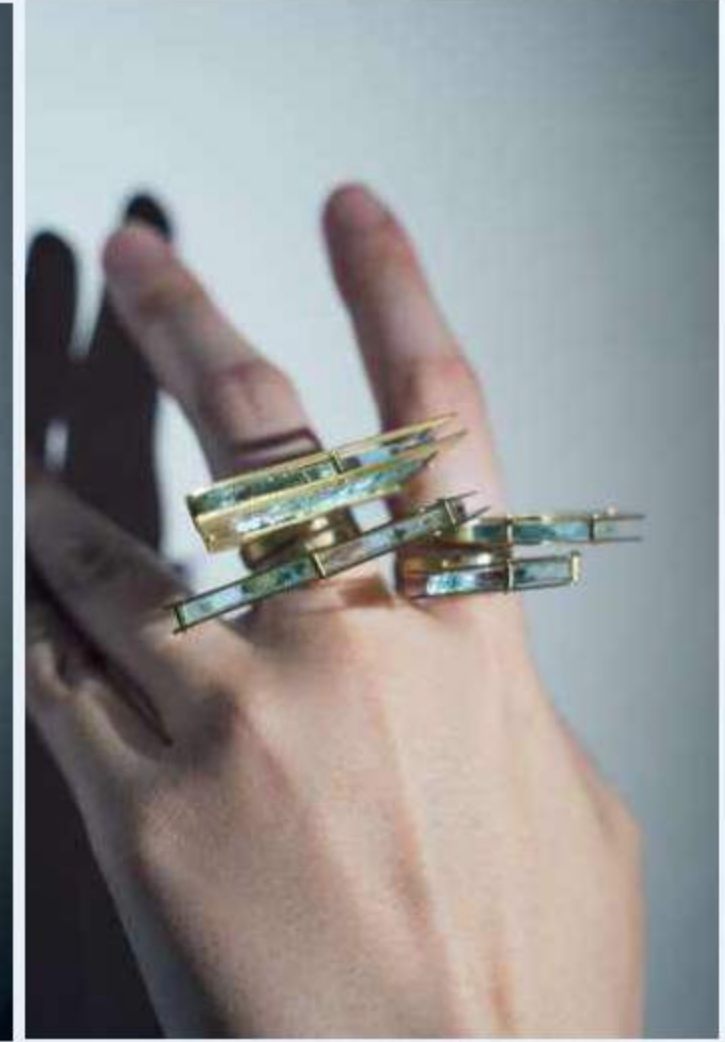


PART THREE: THRIVE AND REMEMBER

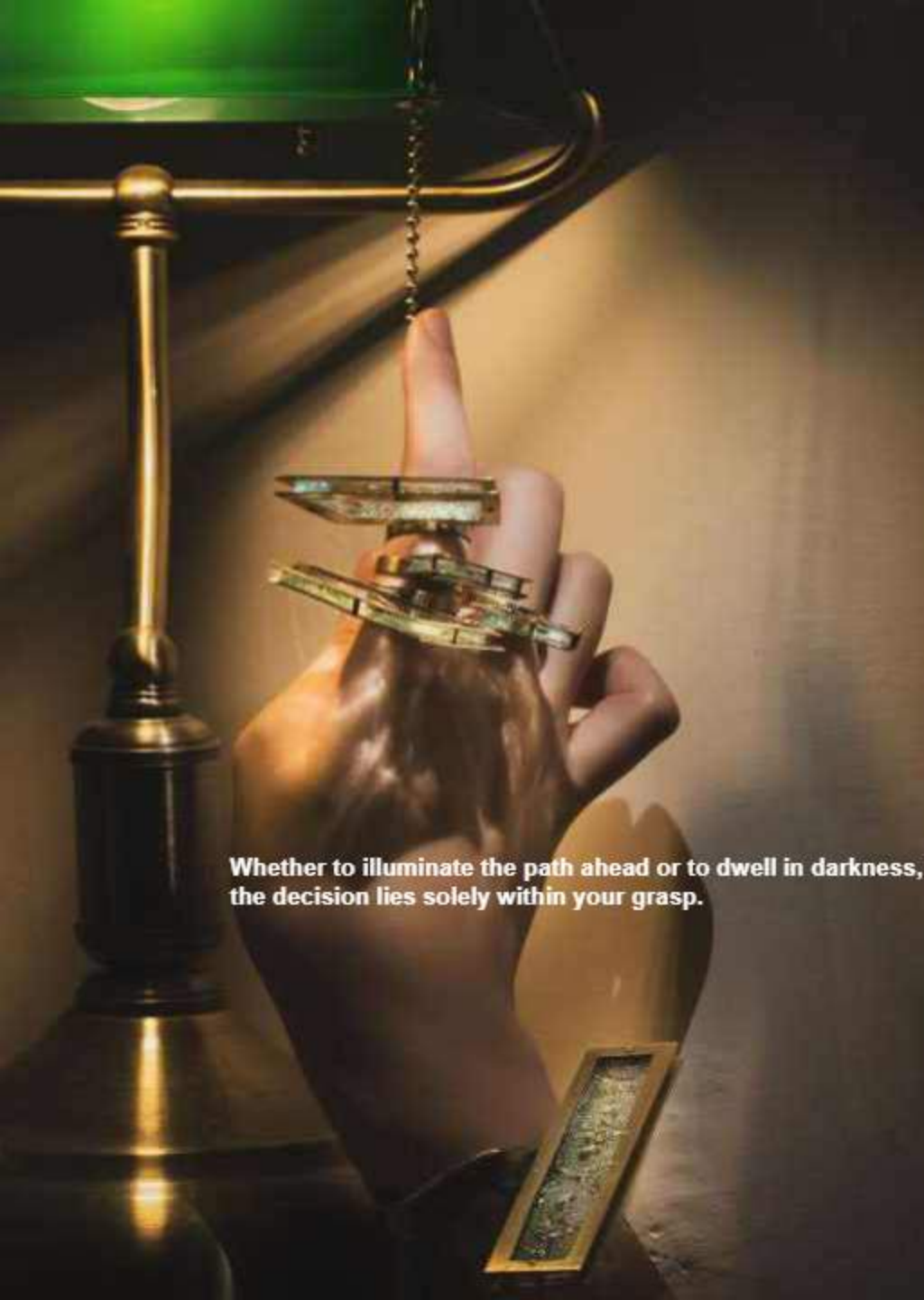


Remember the Good II (Rings)
Materials: Brass, Glass

Remember the Good III (Bangle)
Materials: Brass, Glass



Enveloped behind the intricate veil of patterned glass lies a realm where hope perpetually illuminates the path to dreams. Embracing the entirety of life's spectrum — both its joys and its adversities — serves as a profound lesson fostering personal growth and resilience.



Whether to illuminate the path ahead or to dwell in darkness, the decision lies solely within your grasp.



unfulfilled thinking - (poetic)
The beauty of adversity
Stagnant water
is polluted
The advantage of not being the first that
to allow some light to illuminate the
glass, casting subtle shadows onto
the land.
The end is
very important



PART THREE: THRIVE AND REMEMBER



Keep dreaming (Brooch)
Materials: Brass, 120 Slide Film, Stainless Steel Pin

The brooch captures my maiden voyage into 120-slide film photography. I eagerly ventured around the village that day, capturing my inaugural double exposure. It was a moment I yearned to immortalize with this very brooch.

The oxidized copper frame is a poignant symbol of the fortified village walls. Paired with the film I shot, it converges to create an evocative work of art embodying history and personal craft.

Let's nurture our dreams, perpetuate hope, and steadfastly confront every hurdle with unwavering determination.





