

# JEWELLERY DESIGN PORTFOLIO

Chow kam man  
sterioe@yahoo.com

# Content

- Images of my work
- Artist Statement
- Curriculum Vitae
- Awards

# Introduction

Using traditional jewelry craftsmanship to convey the balance between urban development and ocean conservation needs.

Forgetting, pollution, destruction, and conservation are processes that must be experienced in urban development.

What have we gained and lost due to rapid urban development ? The beautiful ocean must be sacrificed so that the city can develop.

Who wants the marine ecology to be destroyed?

Who can stop the situation from getting worse?

Who can protect marine ecology?

Hong Kong is a small place surrounded by seas and mountains, with much land but little land. Therefore, at different stages of my growth, I have heard that various places in Hong Kong must carry out large or small reclamation projects to exchange for a large amount of land to meet urban development and residents' living standards. Reclamation in Hong Kong has a history of more than a hundred years. In the 1960s and 1970s, when Hong Kong experienced rapid development and increased population, the government began large-scale reclamation to develop new towns. Later, it also carried out large-scale reclamation in Victoria Harbor many times. With land reclamation, the coastlines on both sides of Victoria Harbor are getting closer and closer. It has also begun to draw public attention to how to strike a balance between urban development and marine conservation. When the urban system matures, it still pursues rapid urban development numbly while ignoring and destroying the natural treasures that nature has given us. The public should calm down, slow down, and fully appreciate the importance of nature to urban people's physical and mental health. As long as urban development and ocean conservation are balanced, the world will be better for nature, the most precious gift left to the next generation.

This series is about the cause-and-effect relationship between cities and the ocean, inspiring the public to live behind the scenes of gorgeous metropolises at the expense of the ocean environment. And through the elements of coral reefs, buildings and traditional jewelry crafts, we explore the possibility of protecting the ocean, maintaining ecological balance and urban development. Let the audience reflect on how a balance can be struck between urban development and marine conservation to ensure the health and sustainable development of the marine ecosystem.

In addition, I have been engaged in high-end jewelry production for more than 20 years and have been deeply influenced by traditional handicraft culture. Today's jewelry tends to use technology to mass-produce, causing traditional jewelry craftsmanship to be slowly forgotten and replaced by the public. I personally think that jewelry does not need to be mass-produced, only products need to be mass-produced. Therefore, we hope that through this project, we can use traditional jewelry craftsmanship and technology to create jewelry that breaks boundaries and is innovative and eye-catching.

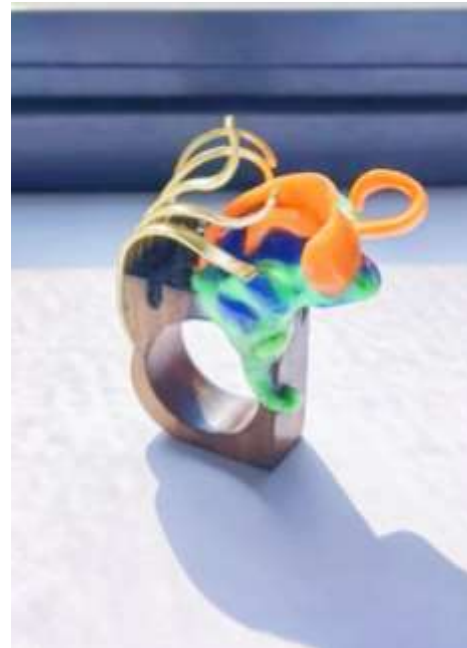
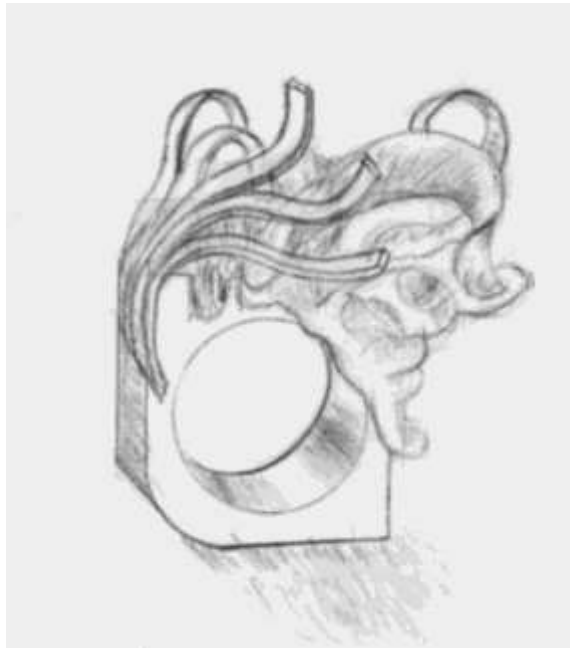


## Artist Statement

Nature is always sacrificed in the process of social development. Only by protecting the environment and ecology can sustainable development be achieved.

Discarded wood floating in the ocean was used to create rings, highlighters were melted with a heat gun to form naturally flowing ocean waves, and bronze was used to create waves hitting the wood.

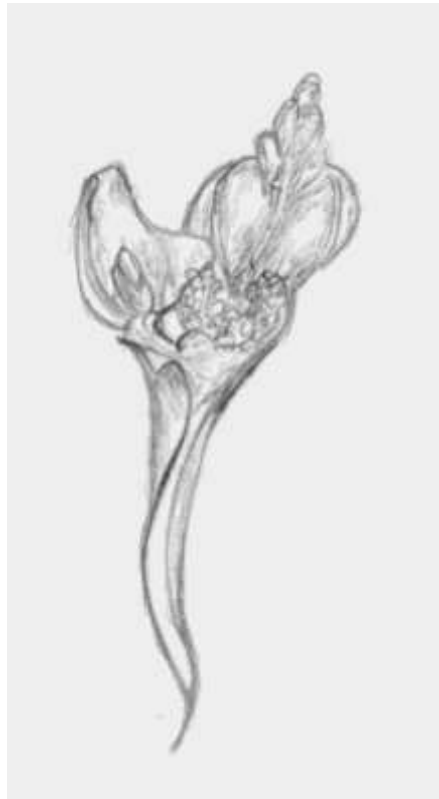
Through this experiment, I found that gradient colors and natural flowing shapes can be created after the highlighter is melted. It can be mixed with different materials and is very dense and solid.



## Artist Statement

Beautiful seashells to draw attention to ocean pollution issues.

The shell has a unique appearance and structure. I tried to explore its plasticity, but the shell is fragile and easily broken. After many tests, I could successfully cut the shell with a diamond blade. This experiment made it very interesting to discover that the shell has a unique structure inside. However, the problem of the very fragile shells needs to be solved, so we try to add melted highlighter to make them look more beautiful and robust.



# Artist Statement

This is a continuation of shell exploration. Regardless of age or distinction, you and I will work together to protect the marine ecology .

Melted highlighter is used to sculpt the polluted ocean, connecting shells of different sizes. Bronze powder was added to the ocean's surface to make it resemble light shining on the ocean's surface. The base is made of bronze to shape the shape of a fish, representing that the ocean is their home Try using melted highlighter to connect shells of different sizes . Through this experiment, it was found that heating and melting the highlighter will cause the shells to turn yellow and become more fragile. At the same time, the more shells there are, the more difficult they are to connect, requiring reasonable temperature control.



# Artist Statement

My work is balancing urban development and protecting the ocean through traditional jewelry craftsmanship.

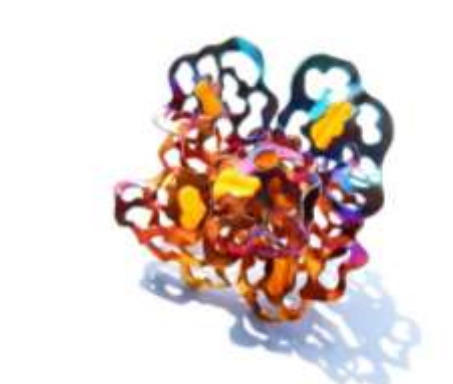
Through a series of online surveys, news information, feature articles, daily observations, etc., you will find the commonalities between them.

The metalworking skills we have today come from the inheritance and development of generations of craftsmen. Having a piece designed and made by the same person is a crucial step in the development. The creative desire is expressed through the hands, thus giving the work natural vitality.

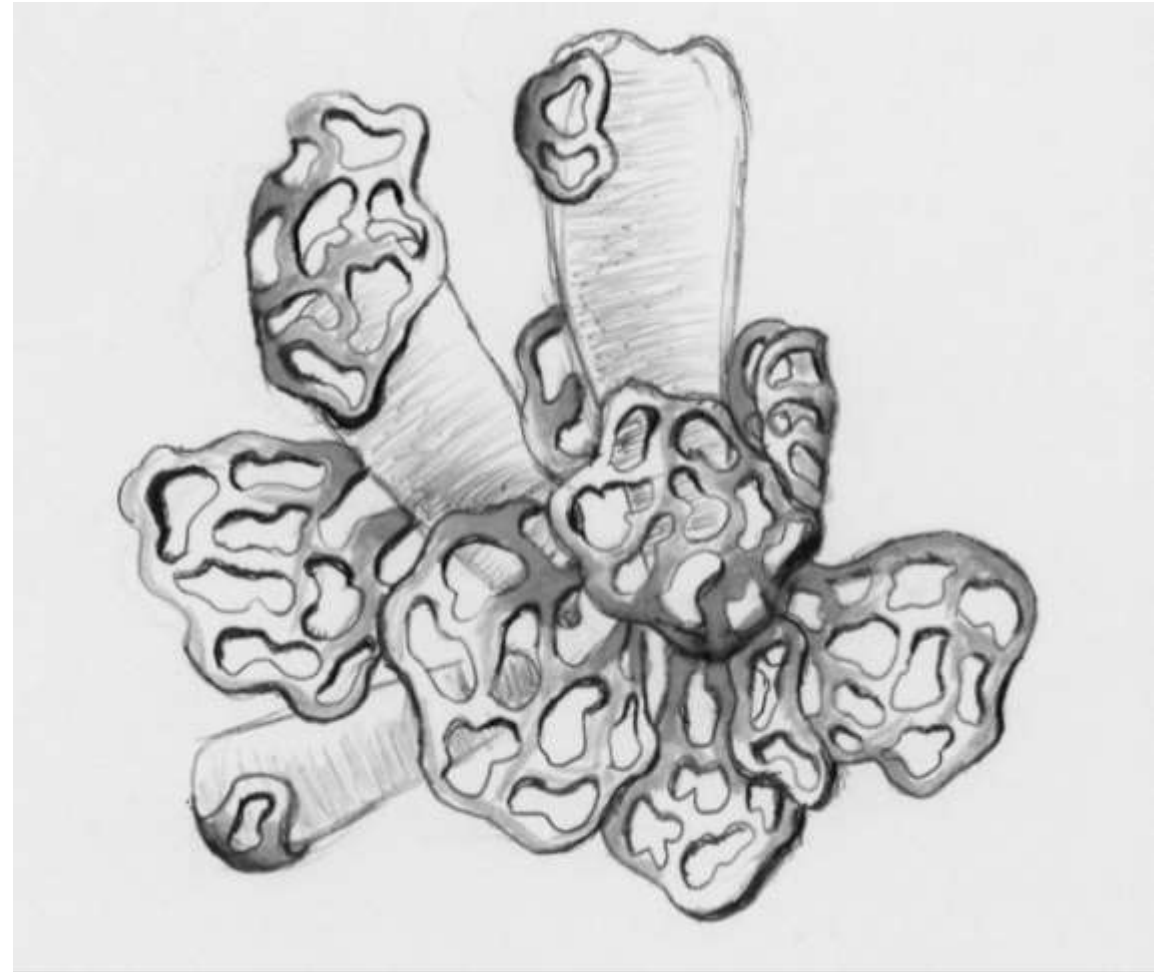
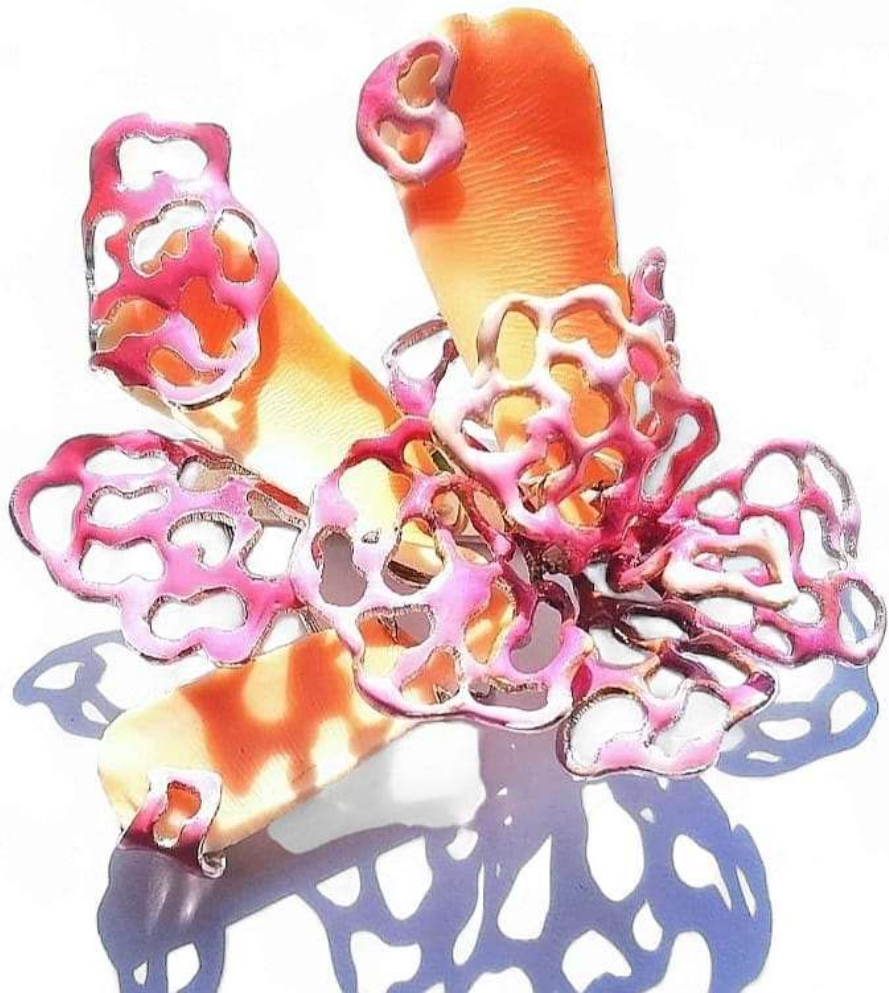
The rapid urban development contrasts sharply with the rapidly bleaching coral reefs under the sea. The forgotten marine environment by the public represents the challenges that traditional jewelry craftsmanship faces today .

Proclaiming the concept of harmonious coexistence, there does not necessarily exist contradictions and substitutions in anything. The key is to achieve sustainable development by achieving a balance.

I used coral reef scenes and urban architecture to create nine works of marine ecology at different times to reveal the pollution and damage of coral reefs.



# Bloom



# Artist Statement

Brooch

Materials: silver, enamel, conch shell

Size: 68mm x 64mm weight: 34g

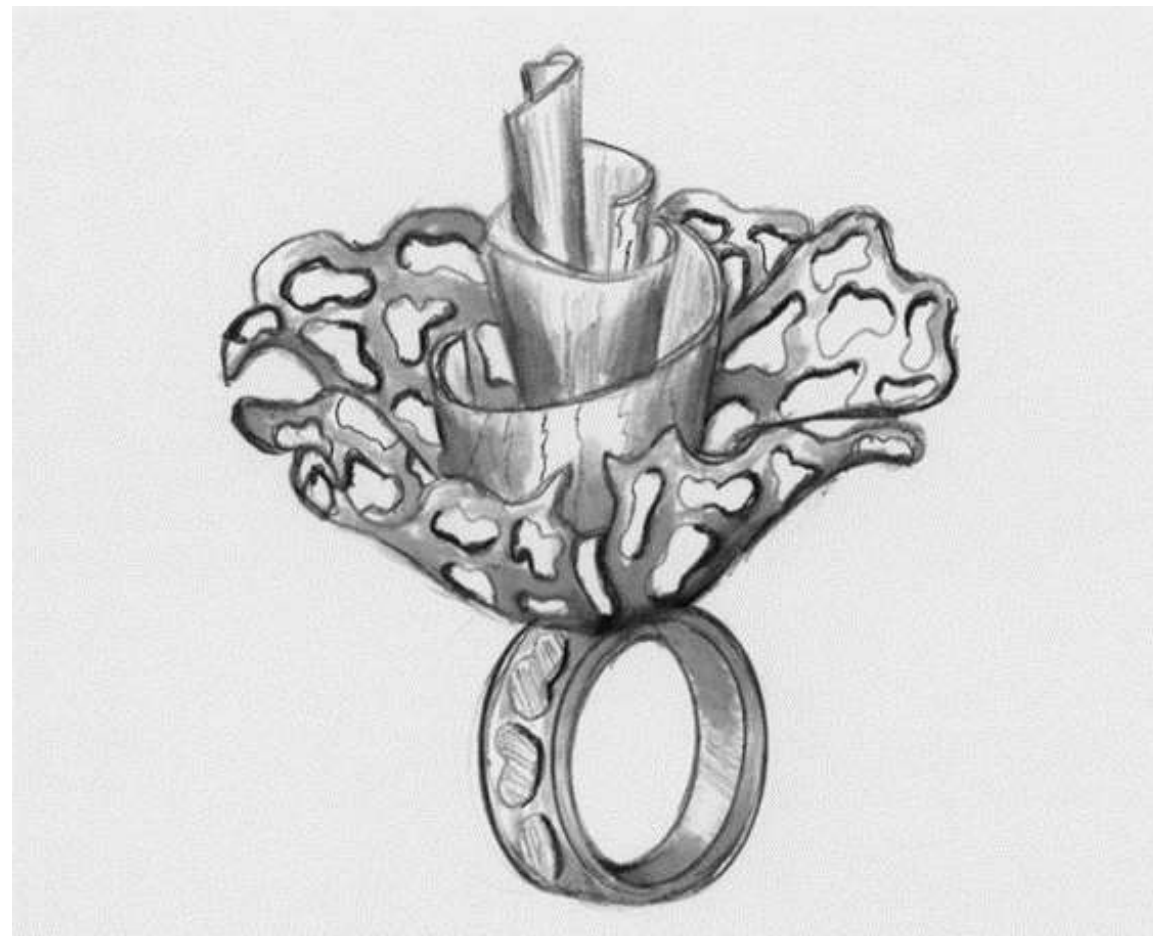
## Bloom

The ocean is a precious treasure of nature. It is rich in biodiversity and maintains the balance of the earth. The vigorous growth of coral reefs shows the prosperity and beauty of the coral reef ecosystem. It is also vital to protecting marine life.

This is a brooch made using fixed-component technology. The rugged holes are made through silver sheets to show the three-dimensional beauty of coral flourishing. Try to incorporate the conch shells thrown on the beach into it. The color and texture of the conch shell can better show the charm of coral. The surface of the brooch is made of bright and moving colors using enamel technology. This is a coral reef scene under a pollution-free marine ecology.



# Forget



## Artist Statement

Ring

Materials: silver, enamel, conch shell, bearing

Size: 55mm x 61mm      weight: 26g

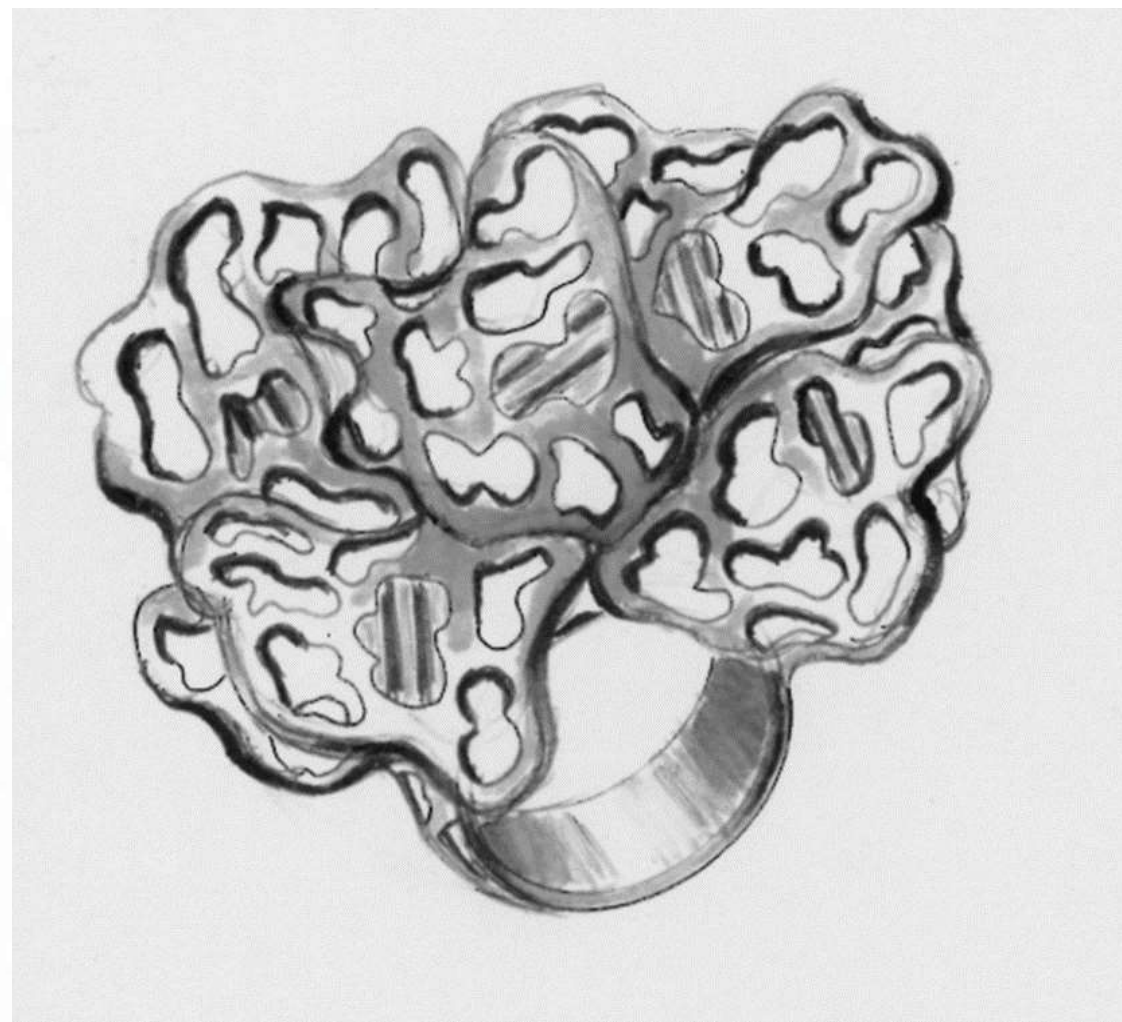
## Forget

This is a continuation of shell exploration. Regardless of age or distinction, you and I will work together to protect the marine ecology .

Melted highlighter is used to sculpt the polluted ocean, connecting shells of different sizes. Bronze powder was added to the ocean's surface to make it resemble light shining on the ocean's surface. The base is made of bronze to shape the shape of a fish, representing that the ocean is their home Try using melted highlighter to connect shells of different sizes . Through this experiment, it was found that heating and melting the highlighter will cause the shells to turn yellow and become more fragile. At the same time, the more shells there are, the more difficult they are to connect, requiring reasonable temperature control.



# Pollute



## Artist Statement

Ring

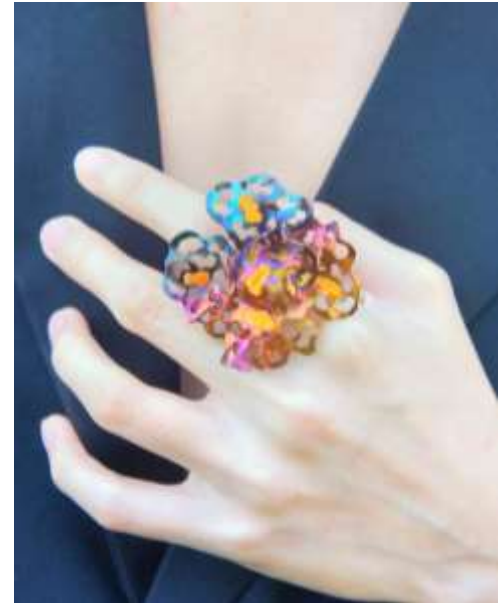
Materials: silver, shells, metal oxidation treatment

Size: 48mm x 39mm    weight: 21g

## Pollute

Beautiful coral reefs are being threatened by urban development and various human activities. Marine pollution affects the growth of corals and marine life, destroys the health and stability of coral reef systems, leads to the continued decline of marine species, and begins to cause damage to biodiversity.

The ring is composed of multiple pieces of silver, showing the structure and layers of a coral reef. The undulating shape brings out the vitality of the original coral. The surface of the ring is oxidized to create colorful colors, and the shells embedded in the metal represent marine pollutants.



# Destroy



# Artist Statement

Ring

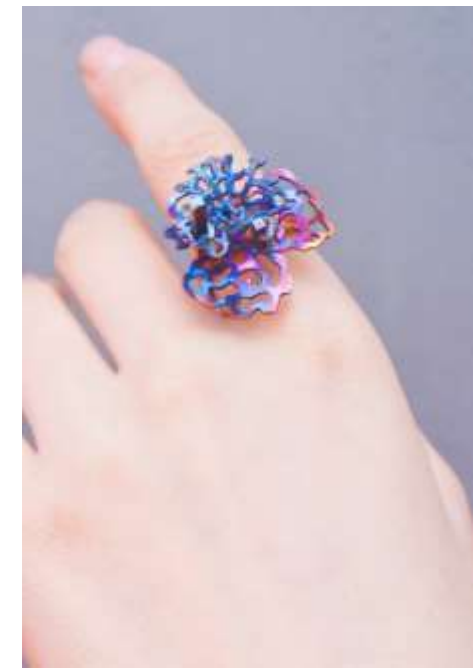
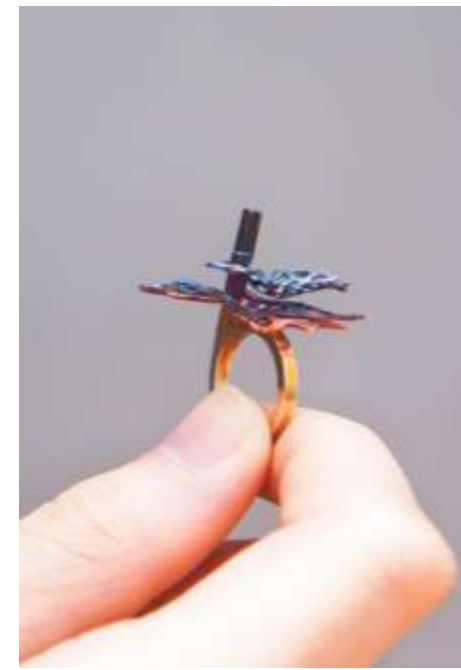
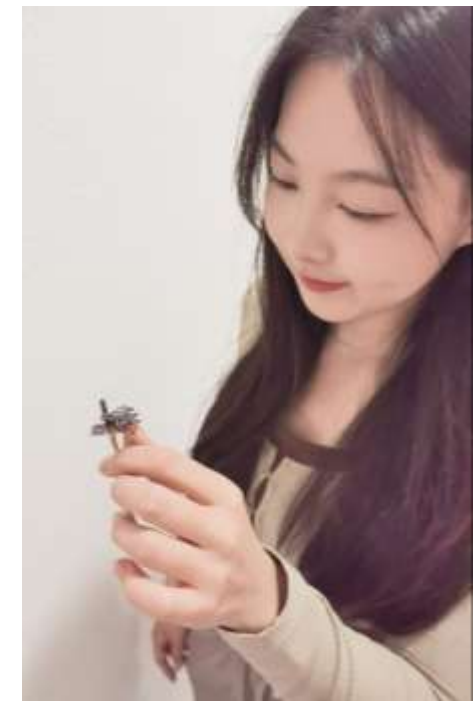
Materials: silver, metal oxidation treatment

Size: 26mm x 38mm      weight: 8g

## Destroy

When cities develop rapidly in exchange for economic benefits, the public often neglects to protect nature, sacrificing underwater urban coral reefs behind the high-rise cities, destroying marine life habitats, and affecting the marine ecosystem.

The simple B-shaped shape of the ring represents the building. There are two layers of corals of different types and textures on the building, indicating that the corals have begun to be destroyed due to marine environmental pollution.



# Choice



# Artist Statement

Brooch

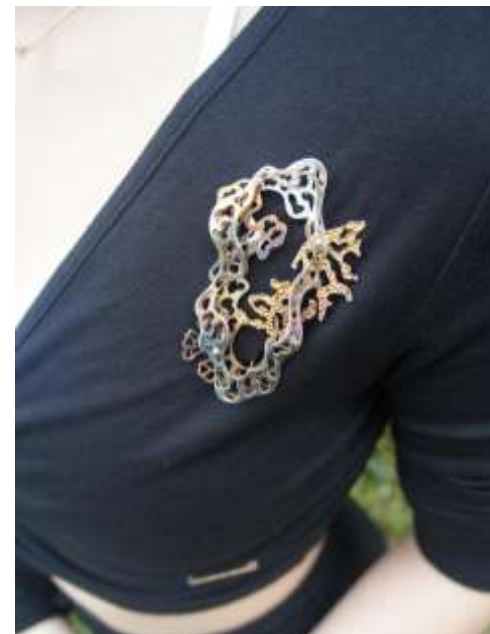
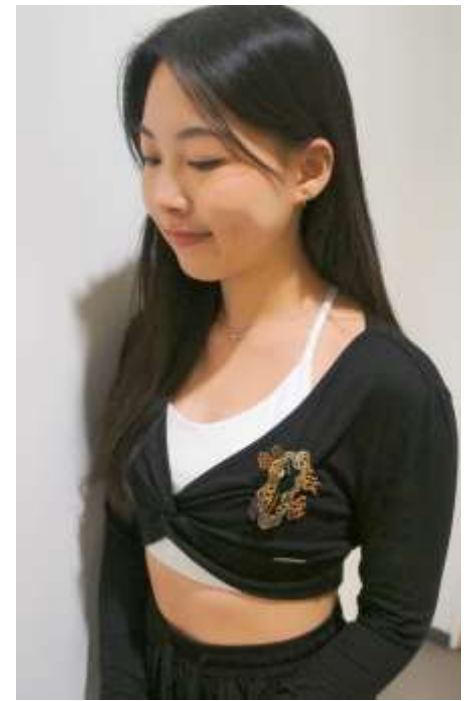
Materials: silver, metal oxidation treatment

Size: 68mm x 64mm weight: 27g

## Choice

As society progresses and knowledge levels increase, the public begins to pay attention to the impact of urban development on the natural environment. Undersea coral reefs, like cities, are habitats for marine life. No one wants to see their home destroyed. We need to reflect and make choices.

This is a very interesting and playful brooch. It is composed of two silver pieces shaped like a coral frame. It is fixed with four screws. The frame can be installed and replaced with small coral components at different positions and rotated to change the appearance of the coral and its growth status. The future is in your hands.



# Repair



## Artist Statement

Bracelet

Materials: silver, metal oxidation treatment

Size: 74mm x 60mm    weight: 50g

## Repair

Make up for the past, repair the present, raise public awareness of conservation, reduce the impact of urban development on the environment and marine ecology, and return the ocean to peace and recuperation.

This is an opening and closing bangle. The current situation of the coral reef is shown on the hand. The damaged corals are slowly repairing themselves; some have returned to their original appearance. The handle uses a duck tongue switch as the switch, and the metal surface is also oxidized to create a lighter phantom color, which makes people hope that one day, the coral will return to its gorgeous color.



# Coexist



# Artist Statement

Ring

Materials: silver, tension springs , metal oxidation treatment

Size:60mm x 44mm weight: 32g

## Coexist

When the public understands the importance of protecting the environment and marine ecology, all things need to depend on each other to survive, and urban development also needs to integrate and coexist with nature to protect our precious natural resources.

This ring is good validation. It integrates urban buildings and coral reef elements to bring out the meaning of coexistence. It cleverly uses two pieces of silver to create a building structure. Corals are connected from bottom to top on the side of the building and grow on the top. A tension springs is added to the coral, and it vibrates, bringing out the beautiful vitality of coexistence.



# Balance



# Artist Statement

Ring

Materials: silver, metal oxidation treatment

Size: 41mm x 39mm weight: 19g

## Balance

Urban development and the protection of nature should coexist harmoniously. Balancing urban development with protecting nature can be challenging but essential. Creating a harmoniously integrated green city does not necessarily involve contradictions and substitutions. The key is to achieve sustainable development by striking a balance. The streamlined building ring has beautiful corals growing on the outer wall. The giant coral extends from the building to the outside of the wall. When the wearer moves the ring, the coral will sway in a balanced manner, awakening the public to reflect on the value of balance most easily overlooked in life.



# Communion



# Artist Statement

Ring

Materials: silver, metal oxidation treatment

Size: 33mm x 33mm x 25mm    weight: 12g

## Communion

Urban development should be open, inclusive, and sustainable, with continuous improvement, progress, and positive changes, integrating environmental and social factors, promoting two-way interaction and symbiotic connection between people and nature, and allowing the public to live at the rapid pace of the city. You can rest and enjoy your leisure time in nature.

This ring integrates the Hong Kong metropolis into the coral reef. When you look down, you can see the undulating corals. Looking at it from the front, you can see the high-rise buildings of Hong Kong. Integration can break societal stereotypes and conflicts and allow us to share a better life.



# Curriculum Vitae

## Personal Details

**Name:** Chow Kam Man Steven (周錦文)

**Nationality:** Chinese

**E-mail:** sterioe@yahoo.com

## Educational

(1999-2000) **Vocation Training Council**-1 Year Full Time Basic Craft Fine-Gold Goldsmithing

(2010-2011) **Hong Kong Jewelry Manufacturers' Association**-Jewelry Design and Gemstone Professional Knowledge Training Programme D

(2022- now) **Hong Kong Design Institute (HKDI)**-Professional Diploma in Jewellery Design

## Qualifications

(2014-2014) Gemological Institute of America-Diploma to Graduate Diamonds

## Working Experience

**2000- 2018**Hong Kong Universal Jewellery Limited-Full Time Goldsmith

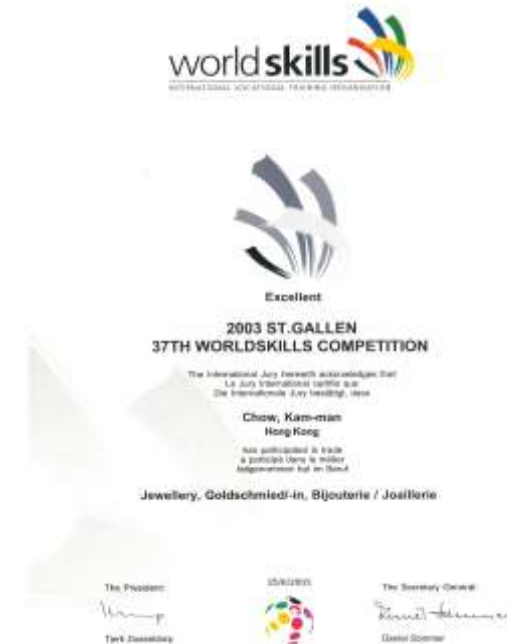
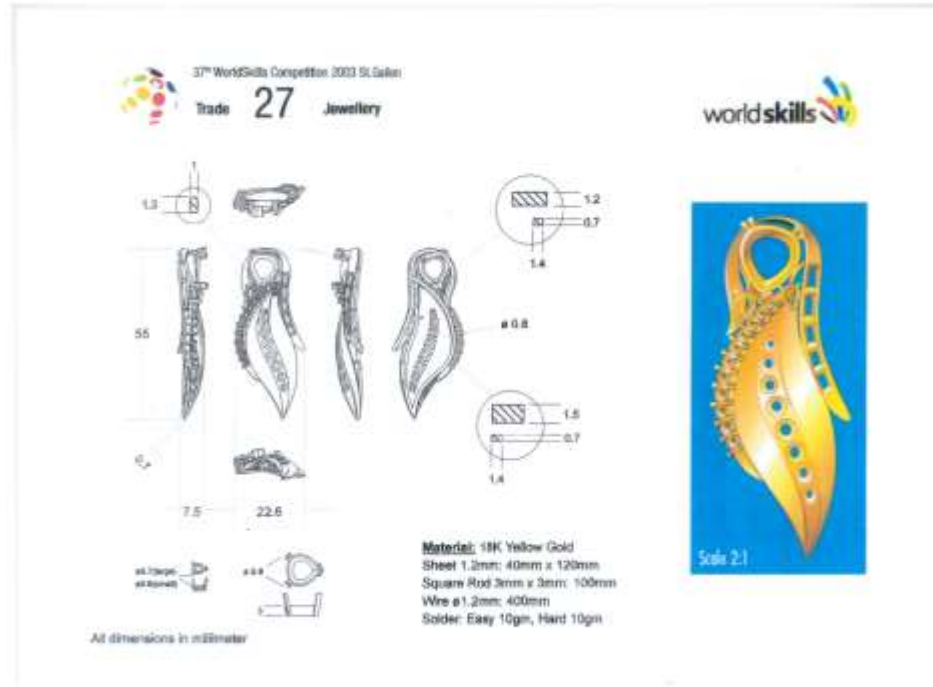
**(2016-2019)** Hong Kong Baptist University School of Continuing Education-Part Time Instructor

**(2019-NOW)**VTC Pro-Act Training and Development Centre (Jewellery) Full Time Instructor



# Awards

Represented Hong Kong in the 37th WorldSkills Competition in St. Gallen, Switzerland, in 2003(jewelry-making project) and won the Merit Award



# Awards

## 2022 Hong kong Jewellery Design Competition

2022 Hong kong Jewellery Design Competition Merit Award of Open Group



( Nurture 孕育 )



( The Spring of Life 泉源 )



# Medal Competition

This is a good experience and challenge. I have no experience making medals, so I have no baggage. Can enjoy the whole process of creating medals. In the process, I also increased my understanding of designing medals. I also tried to produce medals using lost wax casting but failed; it was an excellent experience.

## SHEFFIELD HALLAM UNIVERSITY

JEWELLERY, MATERIALS & DESIGN  
SENIOR LECTURER, & CASTING  
JEFF DURBER

BA JMD COURSE LEADER  
NANTIA KOULIDOU

CASTING, SENIOR TECHNICIAN  
KARL GELEF

*Prize Winner*  
**STEVEN CHOW**  
*Hope, Bronze*

‘The new coronavirus brought the world to a near standstill and made people panic. After the epidemic has passed, the world hopes to return to normality as soon as possible and start anew. The whale – on the obverse of the medal – symbolises hope and the idea of striving forward, to lead people on all seven continents around the world to overcome difficulties, ride the wind and waves and move forward. Plants – the reverse – show their tenacious vitality and can thrive in cracks and bear fruit in harsh environments. They encourage everyone that anything can come true as long as they have hope.’

I created the design in Hong Kong, using Rhino 3D CAD software; the completed file was emailed to Sheffield Hallam to be 3D printed in castable wax, sprued, invested and cast in bronze.’

*Awarded the Ditchling Prize for the excellent use of lettering. The medal is shown on page 60.*

*Prize Winner*  
**STEVEN CHOW**  
*Hope, Bronze*  
*Awarded the Ditchling Prize for Lettering, where lettering is an integral part of the work and its meaning, is central to the overall design. The use of the medal, which appears on the reverse, is central to its appearance.*

